

# Pioneers in Foam Conversion

*Trimoorty*  
Autodeco Components Pvt. Ltd



**Serving from  
last 30 years**

# QMS Certification

## OHSAS 18001



## IATF 16949





## Product Range

- Self Adhesive/Non Adhesive Foam Parts
- Fabric Laminated Foam Parts
- Aluminum Laminated Foam Parts
- Seals & Gasket
- Thermo Formed Components
- Heat Shield/Thermal Jackets
- PU Moulded Foam Components
- Over Moulding Plastics Components
- Fabric Insert Moulded parts
- Felt Parts
- Foam Tapes
- Door Trim
- And More...

## Application

- NVH To reduce Noise  
Vibration Harshness
- Gap Filling
- Filtration purpose
- Thermal Insulation
- Acoustic/Sound Insulation
- Seals & Gasket
- Air Conditions Seals with Moulds
- Packaging
- Door Trim
- Foam Tube ( PU,PE,EPDM)
- And More...



## ROGERS Foam.

Rogers Foam Corporation is U.S.A based organization, they are in manufacturing of High Profile Foam(HPF) material solution like Poron & Bisco.

We Trimoority are preferred convertor of Rogers Corporation in India. We convert Rogers material as per customer's requirement.

## Application of ROGERS Material

- Automotive – EV/HEV
- Connected Devices- Infotainment
- Aerospace & Defence
- Portable Electronics
- Footwear & Impact Mitigation
- Printing
- Wind & Solar energy
- Rail- Metro, Bullet train
- Wired Infrastructure
- Wireless Infrastructure
- Electronic
- General Industrial - Electrical Motor, etc..



# In-House Inspection Facilities



**Tensile Testing Machine**



**Hot Air Circulating Oven**



**Flamability Tester**



**Humidity Chamber**



**Weighing Scales**



**Peel Off Tester**



**Indentation Hardness Tester**



**SHORE Hardness Tester**



**Soft Jaw Vernier**



**Lux Meter**



**Digital Hygrometer**



**Slip Guages**



## Facilities We are Having

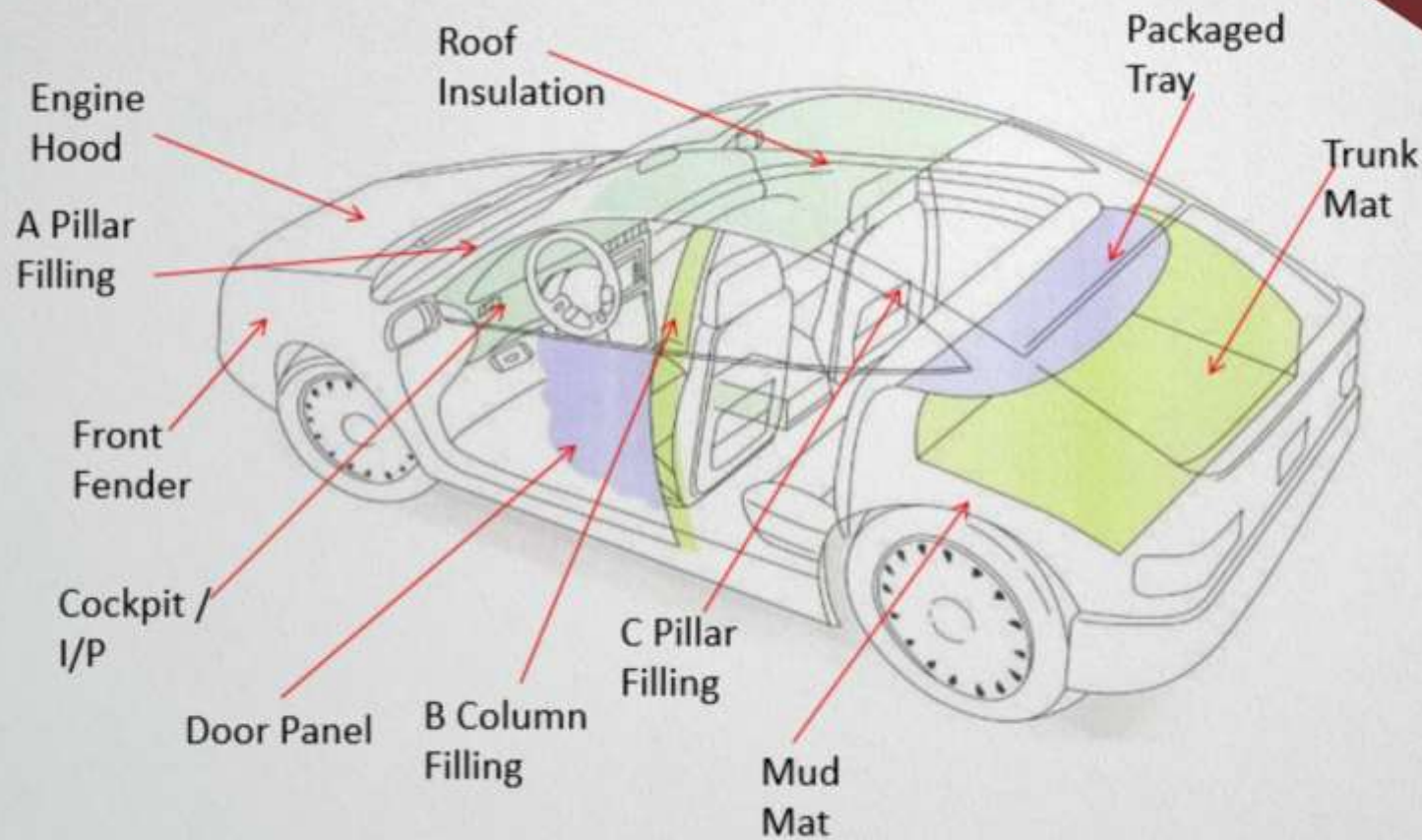
- Single Head & Double Head Laser Cutting Machine
- PU Moulded Foaming
- FIP Manufacturing
- PU Film Application on parts
- Foam Angle Cutting
- Adhesive Spray Process
- Fabric Insert Manufacturing
- Thermoforming
- Assembly of Arm rest
- All Moderns Machinery of Foam Slicing,
- Foam cutting , Die Cutting etc.

## Types of Foams/RM

- PU Foam – Ether/Ester
- Reticulated Foam
- PE Foam – Crosslinked Phy/chem
- Nitrile Foam
- NBR and SBR Neoprene
- EPDM Foam
- Closed Cell PVC Foam
- Expanded PE Foams
- Rebonded Foam
- Rogers High Profile Foam
- Aluminum Foil
- Glass Cloth/Glass wool
- Vinyl/Fabric with Foam
- And More....



# NVH Solutions



## Fabric Inserts Parts in Door Trim





- **Foam Seals For HVAC**
- **Condenser Seals**
- **PU Molded Seals**

Flap



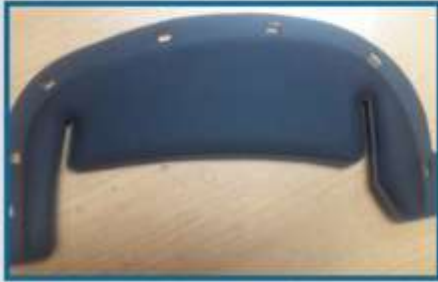
TXV



Dashboard seal



Defrost seal



**Thermoformed Components**



**Armrest**

**PU Foam Tube**



**Produce PU Foam Tube in various ID ,OD and length**



## CHEMICAL COMMODITY / PU MOULDING PROCESS

- Standard (open pouring)
- Vacuum (TPU film base)
- Insert(plastic substrate)

## APPLICATIONS

- Center Console Armrest
- Door Armrest
- Door Impact Pad
- HVAC \_TXV Sealing's & Gaskets
- NVH Applications
- Fender Sound Insulations
- Engine Cover Foam
- Hood Seal Foam
- Integral Skin Foam



FENDER SOUND INSULATIONS



NVH APPLICATIONS



ENGINE COVER FOAM



HVAC-TXV SEALINGS & GASKET



DOOR IMPACT PAD



HOOD SEAL FOAM



CENTER CONSOLE ARMREST



DOOR ARMREST



INTEGRAL SKIN FOAM





## Segments we Serve



### **Automotive**

Passenger car, commercial vehicle Auto OEM, Tier-1, Tier-2



### **Construction Equipment Manufacturer**

Excavator, Backhoe Loader, Skid Steer Loader, Wheel loader



### **Farm Equipment**

#### **Manufacture**

Tractor



### **Home Appliances**

Refrigerator, Air Condition



### **Electronic & Electrical**

Switches, Switch board, Motors



### **Health Care**

Medical Packaging, Gloves, Medical Components, Medical Machinery

# Automotive Customers

## OEM



## Tier-1



## Home Appliances



## Electrical

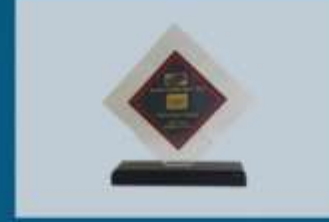


## Construction Equipment





# Awards



Thanks & Regards  
Team

*Trimoorty*  
Autodeco Components Pvt. Ltd

**Contact No: +91 8237087314 | [www.trimoorty.com](http://www.trimoorty.com)**

**Plant I**

Gat No. 309, Village Shivare, Taluka Bhor,  
Dist Pune, Pune – 412205 Maharashtra (India)

**Plant II**

Gat No. 67/1, Village Ahire, Taluka Khandala,  
Dist Satara – 412802 Maharashtra (India)

**Plant III**

S. No. 44, Plot No. 23 & 25 Renuka Industrial Estate,  
Village - Narhe, Taluka - Haweli, Dist- Pune – 411041

**Plant IV**

Shed C, Plat No.29, Area II, CMDA Industrial Estate,  
Maraimalai Nagar, Kachipuram, Tamilnadu – 603209 (India)